



CAMERA CATALOGUE 2026



Ing A.F. Baeder Ges.m.b.H.

📍 Kolpingstraße 13, 1230 Wien

☎ +43 (0)1 865 16 40

✉ sales@baeder-automotive.com

🌐 www.baeder-automotive.com

▶▶▶▶▶ APRIL

TABLE OF CONTENTS



WIRED CAMERA SETS	1
WIRED CAMERA SETS HD	4
WIRED CAMERA SETS WITH SHUTTER	5
WIRED CAMERA SETS HD WITH SHUTTER	6
EDGE AI	7
TURN ASSISTANT „TURN DETECT 2.1“	9
TURN ASSISTANT „TURN DETECT 4.0“	10
WIRELESS CAMERA SETS	11
CAMERAS	12
MONITORS	20
LUIS CABLE	24
ORLACO CABLE	32
ORLACO SPARE PARTS	36

General information:

Dimensions are always given as followed: L x W x H.

CAMERA SET BASIC BLACK

KA500130



Camera Basic

KA500120

- angle of view: 100°H | 60°V
- video system: PAL
- mirror function: horizontal & vertical
- night vision with infrared support
- Protection class: IP68

7" Monitor Basic

KA500125

- resolution: 800 x 480 pixels
- 2 video inputs + 1 trigger line
- integrated loudspeakers

Cable

KA000468

- 20m
- round plug on both sides 4pin., screwable
- Protection class: IP67

CAMERA SET PROFESSIONAL 2.0

KA910130



Camera Professional

KA910120

- Viewing angle: 105°H
- Video format: PAL
- Automatic white balance and backlight compensation
- IR LEDs for powerful night vision capability
- Protection class: IP6xk, IPx9k

7" Monitor Professional

KA902125

- Resolution: 1,024 x 600 pixels
- 3 camera inputs + 3 trigger lines
- Auto-dim function
- Integrated speakers
- Mirror function horizontally & vertically
- Protection class: IP21

Cable

KA000471

- 20m
- round plug on both sides 5pin.
- Protection class: IP66

CAMERA SET COMPACT PROFESSIONAL

KA0004



Camera Compact Professional

KA101088

- angle of view: 110°H | 82°V | 130°D
- video system: PAL
- integrated heating
- Protection class: IP69k

7" Monitor Professional

KA902125

- resolution: 1.024 x 600 pixels
- 3 video inputs + 3 trigger lines
- auto-dim-function
- integrated loudspeakers
- mirror function: horizontal & vertical • Protection class: IP21

Cable

KA000471

- 20m
- round plug on both sides 5pin.
- Protection class: IP66

UNIVERSAL BRAKE LIGHT CAMERA

KA901064



Universal Brake Light Camera

KA101064.V1

- angle of view: 110°H | 82°V | 130°D
- video system: PAL
- integrated heating
- Protection class: IP69k

7" Monitor Professional

KA902125

- resolution: 1.024 x 600 pixels
- 3 video inputs + 3 trigger lines
- auto-dim-function
- integrated loudspeakers
- mirror function: horizontal & vertical
- Protection class: IP21

Cable

KA000471

- 20m
- round plug on both sides 5pin.
- Protection class: IP66

E-LINE CONSIDERATION SET

0410010



FAMOS Camera 118° PAL

0171010

- angle of view: 118°
- video system: PAL
- Protection class: IP69k

7" Monitor „Economy“

0207711

- resolution: 800 x 480 Pixel
- 2 video inputs
- auto-dim-function

Monitor cable

0303070

Connecting cable

0301920

- 16 m
- Double-sided round plug 4 pin.

REVERSING CAMERA SET

KA0005



Kamera Infrarot

KA00052

- angle of view: 120°
- video system: PAL
- IR LEDs for powerful night vision capability
- Protection class: IP69

7" Monitor

KA00051

- resolution: 800 x 480 pixels
- integrated loudspeakers

Kabel

KA00053

- 20 m
- round plug on both sides 4pin.
- Protection class: IP66

CAMERA SET HD PROFESSIONAL

KA910230



Camera HD Professional

KA910220

- angle of view: 95°H | 76°V
- video system: PAL
- IR LEDs for powerful night vision capability
- Protection class: IP69K

7" HD Monitor

KA910210.PRO7HD.V1

- resolution: 1.024 x 600 pixels
- 3 video inputs + 3 trigger lines
- auto-dim-function
- mirror function: horizontal & vertical
- Protection class: IP22

Cable

KA000471

- 20 m
- round plug on both sides 5pin.
- Protection class: IP66

360° CAMERA SET PROFESSIONAL V1

KA310360.PRO7HD.V1

Standard Vehicles



Camera AHD (4x)

- angle of view: 140°V
- video system: PAL, NTSC
- IR LEDs for powerful night vision capability
- Protection class: IP68

7" HD Monitor

- resolution: 1.024 x 600 pixels
- 3 video inputs
- auto-dim-function
- mirror function: horizontal & vertical
- Protection class: IP21

KA312360.PRO7HD.V1

Emergency vehicles

KA313360.PRO7HD.V1

Special vehicles

KA313360.OMO.V1

Set without monitor



Cable

- 1 x 5m, 2 x 15m, 1 x 20m
- 5pol.

also included:

- 360° control box
- GPS module
- system cable

optional:

- 360° calibration mat set | KA310366
- 10" Monitor | KA301124



CAMERA SET R7-S WITH SHUTTER

KA300501



Camera R7-S

KA300502

- angle of view: 110°H | 80°V | 135°D
- video system: PAL
- integrated heating
- electric shutter cover
- automatic white balance and backlight compensation
- IR LEDs for powerful night vision capability
- Protection class: IP69k

7" R7-S Monitor

-

- resolution: 800 x 600 pixels
- 2 video inputs + 2 trigger lines
- auto-dim-function
- integrated speakers
- mirror function: horizontal & vertical

Cable

KA000471

- 20m
- round plug on both sides 5pin.
- Protection class: IP66

CAMERA SET R7-S COMPACT WITH SHUTTER

KA101049



Camera R7-S Compact

KA101050

- angle of view: 120°H
- video system: PAL
- integrated heating
- mirror function: horizontal & vertical
- IR LEDs for powerful night vision capability
- Protection class: IP69k

7" R7-S Monitor

-

- resolution: 800 x 600 pixels
- 2 video inputs + 2 trigger lines
- auto-dim-function
- integrated speakers
- mirror function: horizontal & vertical

Cable

KA000471

- 20m
- round plug on both sides 5pin.
- Protection class: IP66

CAMERA SET R7-S HD SHUTTER

KA300501.PRO7HD



R7-S Rear View Camera HD | KA300502.AHD109.V2

- angle of view: 109°H | 58°V | 125°D
- video system: PAL/NTSC
- integrated heating
- automatic white balance and backlight compensation
- IR LEDs for powerful night vision capability
- Protection class: IP69k

7" Monitor HD | -

- resolution: 1.024 x 600 pixels
- 3 video inputs
- mirror function: horizontal & vertical

Cable | KA000471

- 20m
- round plug on both sides 5pin.
- Protection class: IP66

LUIS EDGE AI is an intelligent solution that can distinguish people from another obstacle in real time and warn them in several stages in the event of danger. Object recognition runs on the camera in a space-saving manner („embedded“) and therefore does not require any additional hardware or ECUs. The detection zones and warning mechanisms can be individually adapted to the respective vehicle. In this way, the camera helps to avoid collisions with people in driving situations.



EDGE AI CAMERA

KA001201.AHD140.V1

Viewing angle: 140° H



KA001201.AHD52.V1

Viewing angle: 52° H

Camera Edge Ai: general characteristics

- Resolution: 1,920 x 1,080 pixels
- Video format: PAL
- Mirror function
- Real-time person detection
- Detection zones and warning mechanisms can be individually adapted
- Output of control signals
- Image mirror function switchable
- Protection class: IP69k

EDGE AI CALIBRATION BOX

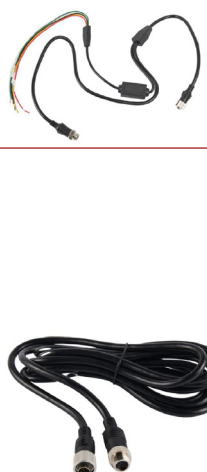
KA001202



Edge Ai Calibration box

- calibration set for the LUIS Edge camera
- plug connections: USB 2.0
- Protection class: IP30

EDGE AI CABLE

Designation	Länge	Pin.	Itemnr.	Illustration
Edge AI cable incl. trigger	1 m	8 pin.	KA001205	
Edge AI extension cable	3 m		KA001250	
Edge AI extension cable	5 m		KA001251	
Edge AI extension cable	10 m		KA001252	
Edge AI extension cable	20 m		KA001253	

EDGE AI COMPATIBLE MONITORS

KA301125



7" Touchmonitor

- resolution: 1.920 x 1.080 pixels
- 4 video inputs + 5 trigger lines
- auto-dim-function
- mirror function: horizontal & vertical
- quad and split function
- Protection class: IP66

KA301124



10" Quad Touch Monitor

- resolution: 1.024 x 600 pixels
- 4 video inputs + 4 trigger lines
- integrated speakers
- mirror function: horizontal & vertical
- quad and split function
- Protection class: IP30

TURN ASSISTANT „TURN DETECT 2.1“



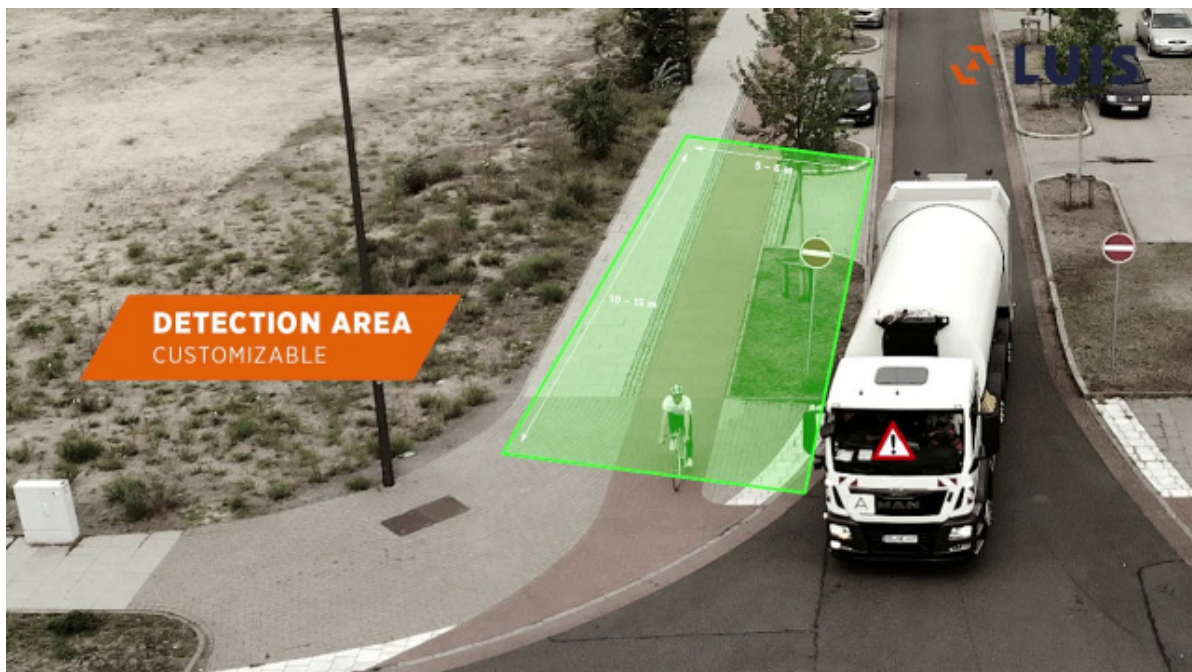
Camera set	GPS	
TD V2.1 7" Monitor	with sensor	KA420401
TD V2.1 7" Monitor	without sensor	KA420406
TD V2.1 10" Monitor	with sensor	KA420411

Set consists of

Camera TD150	KA400430
7" Monitor Professional	KA902125
Systemcable	KA400425
Control Box	KA420402
GPS Module	KA401401
Buzzer	KA420412
Controller	KA400415
Systemcable Monitor	KA510003
5m 5pol.	KA005405
Sensor	KA400414
Steering angle heel	KA400416
Holder Sensor	KA400417

Accessories

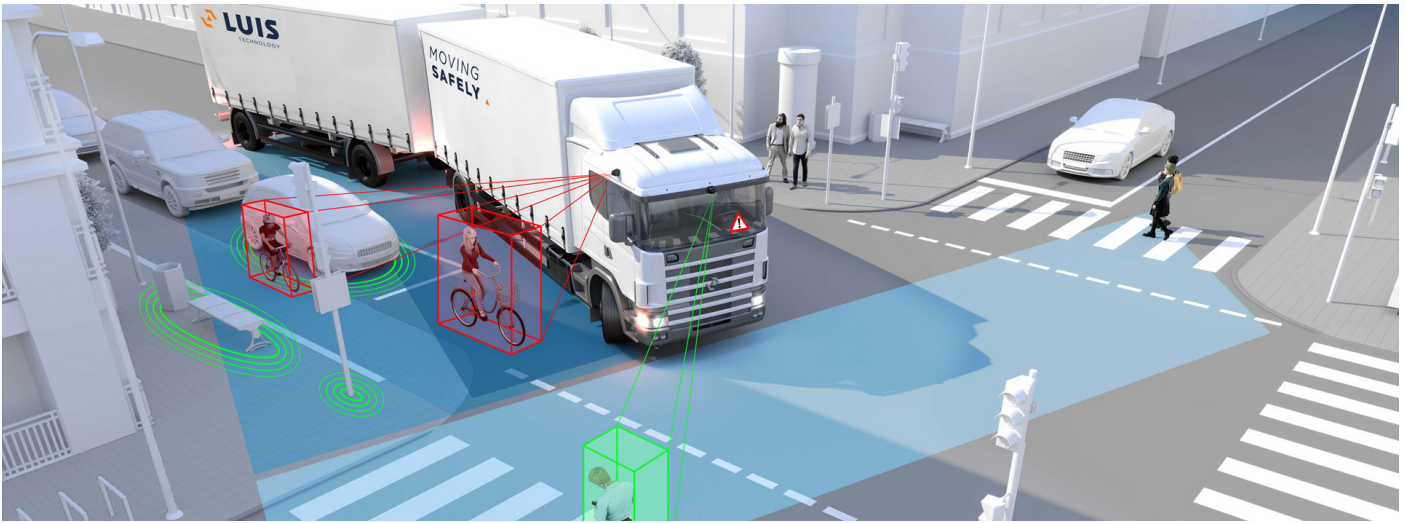
Calibration remote control	KA400410
Camera Holder	KA400421
Status-LED	KA420426



TURN ASSISTANT „TURN DETECT 4.0“



The LUIS TURN DETECT® 4.0 is based on many years of experience with camera AI technology and is the first system to fulfil the high UN ECE R151 requirements!



- reliable classification of people at risk and cyclists
- no detection of other objects such as moving or parked cars to minimise false alarms
- detection of cyclists - even in the 2nd row, e.g. behind parked cars
- detection also of stationary people and cyclists
- fulfils both the Europe-wide R151 and national BMDV recommendation
- 3-stage warning to reduce distraction
- can be extended to fulfil ECE R159
- full range of functions even in the dark
- short installation time



Cameras et

Turn Detect 4.0 with LED traffic light	KA430400.LED.V1
Turn Detect 4.0 with AHD Quad Monitor	KA430400.QUAD10.V1

Accessories

LED traffic light	KA430439
calibration set	KA430468



DIGITAL WIRELESS CAMERA SET

KA010555.PRO7DF.1CH

with 1 camera



Digital Wireless Camera

KA010545.PAL85.V1

- angle of view: 95°H | 76°V
- video system: PAL
- automatic white balance and backlight compensation
- IR LEDs for powerful night vision capability
- 200m wireless signal
- Protection class: IP69k

7" Monitor

KA010535.PRO7DF.V2

- resolution: 1.024 x 600 pixels
- 4 video inputs + trigger lines

KA010555.PRO7DF.2CH

with 2 camera



KA010555.PRO7DF.3CH

with 3 camera



KA010555.PRO7DF.4CH

with 4 camera



CAMERA SET WIRELESS DIGITAL

KA0006



Camera wireless digital

KA00062

- angle of view: 120°
- video system: PAL
- integrated loudspeakers
- IR LEDs for powerful night vision capability
- 100m wireless signal
- Protection class: IP67

7" HD Monitor

-

- resolution: 800 x 480 pixels
- integrated loudspeakers

DIGITAL TRANSMITTER-SET PROFESSIONAL AHD 5 POLIG

KA000960V2



Digital Transmitter Professional

- Resolution: 1,280 x 720 pixels
- Range: 500m (open field) / 30m (with obstacle)
- Protection class: IP69

Power cable

Antenna extension

WIRED CAMERAS WITHOUT SHUTTER

KA500120



Camera Basic

- angle of view: 80°H | 65°V | 105°D
- resolution: 752 x 582 pixels
- video system: PAL
- sensor: 1/3 CMOS
- 78 x 76 x 78mm
- night vision with infrared support
- automatic white balance and backlight compensation
- plug 4pin.
- Protection class: IP68

KA910120



Camera Professional 2.0

- angle of view: 105°H | 84°V
- resolution: 752 x 582 pixels
- video system: PAL
- sensor: 1/3 Sony CCD
- 70 x 55 x 45mm
- night vision with infrared support
- automatic white balance and backlight compensation
- mirror function: horizontal & vertical
- plug 5pin.
- Protection class: IP69k

auch erhältlich mit NTSC
Videoformat: **KA9101206**

KA101088



Camera Compact Professional

- angle of view: 110°H / 82°V / 130°D
- resolution: 960 x 480 pixels
- video system: PAL
- sensor: CMOS
- 38,3 x 36,5 x 30mm
- automatic white balance and backlight compensation
- integrated heating
- plug 5pin
- Protection class: IP69k

KA00052



for Set KA0005

Camera

- angle of view: 120°
- resolution: 752 x 487 pixels
- video system: PAL
- sensor: CMOS
- 70 x 45 x 60mm
- night vision with infrared support
- integrated heating
- plug 4pin.
- Protection class: IP69

KA002808



Camera OE Typ 2

- angle of view: 42°H | 20°V | 50°D
- video system: PAL
- resolution: 976 x 494 pixels
- sensor: 1/3 CMOS
- 64 x 35 x 38mm
- automatic white balance and backlight compensation
- plug 4/5pin.
- Protection class: IP68K

WIRED HD CAMERAS WITHOUT SHUTTER

KA910220



Camera HD Professional

- angle of view: 95°H | 76°V
- resolution: 1.920 x 1.080 pixels
- video system: AHD
- sensor: Sony CMOS
- night vision with infrared support
- integrated heating
- mirror function: horizontal & vertical
- plug 5pin.
- Protection class: IP69k

KA910301



Flat Camera HD

- angle of view: 150°H | 76°V
- resolution: 1.920 x 1.080 pixels
- video system: PAL
- sensor: FH8536H + C2399
- 199,13 x 26,8 x 28,13mm
- night vision with infrared support
- mirror function: horizontal & vertical
- integrated microphone
- plug 5pin.
- Protection class: IP68

WIRED CAMERAS WITH SHUTTER

KA901050



Camera Professional Shutter

- angle of view: 90°H | 70°V
- resolution: 752 x 582 pixels
- video system: PAL
- sensor: CMOS
- 85,7 x 61,25 x 71,02mm
- night vision with infrared support
- mirror function: horizontal & vertical
- integrated heating & microphone
- plug 5pin.
- Protection class: IP69k

KA101050



Camera R7-S Compact

- angle of view: 120°H | 90°V
- resolution: 752 x 582 pixels
- video system: PAL
- sensor: Sharp CCD
- 85,7 x 61,25 x 71,02mm
- night vision with infrared support
- mirror function: horizontal & vertical
- integrated heating & microphone
- plug 5pin.
- Protection class: IP69k

also available with NTSC video format **KA1010506**

KA300502



also available with NTSC
video format: **KA3005026**

Camera R7 Shutter

- angle of view: 110°H | 80°V | 135°D
- video system: PAL
- resolution: 752 x 582 pixels
- sensor: Sharp CCD
- 79 x 120 x 86mm
- night vision with infrared support
- automatic white balance and backlight compensation
- integrated heating & microphone
- plug 5pin.
- Protection class: IP69k

KA300502.AHD109.V2



Camera R7-S AHD Shutter

- angle of view: 109°H | 58°V | 125°D
- video system: PAL/NTSC
- resolution: 1.920 x 1.080 pixels
- sensor: Sony CMOS
- 85 x 62 x 70mm
- night vision with infrared support
- automatic white balance and backlight compensation
- mirror function: horizontal & vertical
- integrated heating
- plug 5pin.
- Protection class: IP69K

DIGITAL WIRELESS CAMERA

KA010545.PAL85.V1



Digital Wireless Camera 720p

- angle of view: 95°H | 76°V
- video system: PAL
- resolution: 1.280 x 720 pixels
- sensor: CMOS
- 74 x 56,5 x 45,5mm
- automatic white balance and backlight compensation
- night vision with infrared support
- 200m kabelloses Signal
- Protection class: IP69k

KA00062



Camera Wireless Digital 720p

- angle of view: 120°
- video system: PAL
- resolution: 976 x 494 pixels
- integrated heating
- night vision with infrared support
- 100m wireless signal
- Protection class: IP67

SPECIAL CAMERAS

KA400430



Camera TD150 for Turn Assist TD V2.1

- angle of view: 135°H
- resolution: 752 x 582 pixels
- video system: PAL
- sensor: 1/4 Sony CCD
- 85 x 81 x 63mm
- night vision with infrared support
- automatic white balance and backlight compensation
- plug 5pin.
- Protection class: IP68

KA001302



Digital camera for Sprinter

CABLE FOR SPRINTER CAMERA

KA00378810.V2



Digital cable 5.8m for Sprinter

- Connector connectors: MQS connector, Fakra connector F-coded,
M8x1 Coupling, TNC Coaxial Coupling
- Number of wires: 4 + RG174 coaxial
- Material: PVC

KA00379010.V2



Digital cable 5.8m for Sprinter

- Connector Connectors: M8x1 Connector, TNC Coaxial Connector, MQS Connector, Fakra Female B-Coded
- Number of wires: 4 + RG174 coaxial
- Material: PVC

ORLACO FAMOS COMPAKT-CAMERAS

Itemnr.	Angle of view	Video sytsem	Mirror function
0171050	40°	PAL	X
0171030	80°	PAL	X
0171020	102°	PAL	X
0171220	102°	PAL	✓
0171010	118°	PAL	X
0171110	118°	NTSC	X
0171210	118°	PAL	✓
0171230	118°	NTSC	✓
0171880	129°	PAL	✓
0171070	170°	PAL	X



ORLACO FAMOS COMPAKT-CAMERAS MIT INFRAROT

Itemnr.	Angle of view	Video system	Mirror function
0171600	118°	Infrarot PAL	X
0171900	118°	Infrarot PAL	✓



ORLACO CAMERA ACCESSORIES

0402320



Protective body

0402360



Aerodynamic camera body

0402310



Aerodynamic camera body and nozzle

BRAKE LIGHT CAMERAS

KA101064**Universal Brakelight Camera**

- angle of view: 135°H
- resolution: 968 x 488 pixels
- video system: PAL
- sensor: CMOS
- 212 x 62 x 63mm
- night vision with infrared support
- mirror function: horizontal & vertical
- plug 4pin.
- Protection class: IP68

KA101066**Brakelight Camera Ducato**

- angle of view: 110°H | 80°V | 135°D
- resolution: 976 x 582 pixels
- video system: PAL
- sensor: CMOS
- 87 x 263 x 56mm
- night vision with infrared support
- automatic white balance and backlight compensation
- integrated microphone
- plug 4pin.
- Protection class: IP68

KA101067**Brakelight Camera Sprinter & Crafter**

- angle of view: 95°H | 70°V
- resolution: 976 x 494 pixels
- video system: NTSC
- sensor: CMOS
- 341,7 x 66,6 x 93,6mm
- night vision with infrared support
- mirror function: horizontal & vertical
- plug 4pin.
- Protection class: IP69

KA101068



Brakelight Camera IVECO Daily BJ 2011-2014

- angle of view: 110°H | 90°V | 170°D
- resolution: 976 x 494 pixels
- video system: PAL
- sensor: CMOS
- 251,4 x 41 x 67,6mm
- automatic white balance and backlight compensation
- mirror function: horizontal & vertical
- plug 4pin.
- Protection class: IP69k

KA101069



Brakelight Camera Crafter/MAN TGE from BJ 2017

- angle of view: 120°D
- resolution: 976 x 494 pixels
- video system: PAL
- sensor: 1/3 CMOS
- 533 x 110 x 261mm
- night vision with infrared support
- automatic white balance and backlight compensation
- plug 4pin.
- Protection class: IP69k

KA101073



Brakelight Camera Renault Master, Opel Movano, Nissan NV400

- angle of view: 110°H | 80°V | 135°D
- resolution: 976 x 494 pixels
- video system: PAL
- sensor: 1/3 CMOS
- 197 x 127 x 106mm
- automatic white balance and backlight compensation
- plug 4pin.
- Protection class: IP69k

KA905125



MONITORS

5" Professional Monitor

- resolution: 800 x 480 pixels
- video system: PAL/NTSC
- 80 x 210 x 135mm
- 3 video inputs
- integrated speakers
- mirror function: horizontal & vertical
- parking lines can be displayed
- Protection class: IP21



KA902125



7" Professional Monitor

- resolution: 1.024 x 600 pixels
- video system: PAL/NTSC
- 77 x 215 x 135mm
- 3 video inputs + 3 trigger lines
- auto-dim-function
- integrated speakers
- mirror function: horizontal & vertical • Protection class: IP21



020771



7" Monitor Economy

- resolution: 800 x 480 pixels
- video system: PAL/NTSC
- 2 video inputs • IP54



0303070

Monitor cable for e-line set



0400610

DDIN mounting adapter



0400600

Flexible DDIN mounting adapter



KA00051



7" TFT LCD Monitor

- resolution: 800 x 480 pixels
- video system: PAL/NTSC
- 177 x 122 x 26mm
- 2 video inputs
- integrated speakers
- Protection class: IP69

TOUCH MONITORE

KA301125



7" Touchmonitor

- resolution: 1.920 x 1.080 pixels
- video system: PAL/NTSC
- 197 x 131 x 37mm
- 4 video inputs + 5 trigger lines
- auto-dim-function
- mirror function: horizontal & vertical
- quad and split function
- Protection class: IP66



KA301124

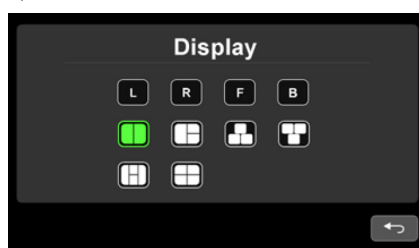


10" Touch Quad Monitor

- resolution: 1.024 x 600 Pixel
- video system: PAL/NTSC
- 27 x 19 x 81,5mm
- 4 video inputs + 4 trigger lines
- integrated speakers
- mirror function: horizontal & vertical
- quad and split function
- Protection class: IP30



*possible variants of the camera views



HD & QUAD MONITORS

KA910210.PRO7HD.V1



7" HD Monitor Professional

- resolution: 1.024 x 600 pixels
- video system: PAL/NTSC
- 180 x 125 x 25mm
- 3 video inputs + 3 trigger lines
- auto-dim-function
- integrated speakers
- mirror function: horizontal & vertical
- Protection class: IP22



KA910210.QUAD7HD.V1



7" HD Quad Monitor Professional

- resolution: 1.024 x 600 pixels
- video system: CVBS
- 80 x 120 x 135mm
- 4 video inputs + 5 trigger lines
- integrated speakers
- quad and split function



KA920210.QUAD7HD.V1



7" HD Quad Monitor Professional Waterproof

- resolution: 1.024 x 600 pixels
- video system: AHD/PAL/NTSC
- 210 x 153,5 x 80mm
- 4 video inputs + 4 trigger lines
- quad and split function
- Protection class: IP68



KA910210.QUAD10HD



10" Quad-Monitor HD Professional

- resolution: 1.024 x 600 pixels
- video system: AHD/PAL/NTSC
- 285 x 184 x 76mm
- 4 video inputs + 4 trigger lines
- integrated speakers
- quad and split function
- Protection class: IP21



CAMERA CABLE



Itemnr.	Length	Plug
KA000452	2 m	4 pin.
KA000458	5 m	
KA101025	10 m	
KA000451	15 m	
KA000468	20 m	
KA005401	1 m	5 pin.
KA005402	2 m	
KA005405	5 m	
KA005410	10 m	
KA005415	15 m	
KA000471	20 m	
KA700013	5pin. female to 4pin. male	
KA700028	4pin. to 5pin. camera shutter	
KA700128	4pin. to 5pin. camera	

TRAILER CABLE SET COMPACT CAR & SMALL VANS

KA002099



Trailer cable set incl. bracket

- connection cable between motor vehicle and trailer
- quick connection for trailer operation
- compatible with all LUIS video reversing systems from July 2008 (except LUIS R7-S) without shutter function
- 4pin

KA002101



Trailer cable set for R7-S

- trailer cable set compatible with LUIS R7-S
- quick connection for trailer transport
- 5pin.
- Protection class: IP66

SET FOR DRAWBAR TRAILERS WITH MAN. SWITCHING

KA0010



Scope of delivery

- 1x 2-channel switch box, 5-pin
- 2x 20 m cable, 5-pin
- 1x 5-pin socket for tractor unit (for connecting a monitor)
- 1x 7-pin trailer plug with 0,3 m cable

ITEMS

KA101099



2-channel switch box 5-pin

- input 5-pin (2x) + trigger (1x)
- output 5-pin (1x)
- connection of two camera signals via only one control voltage on one monitor

KA000471



Cable

- 20 m
- 5-pin round plug on both sides
- Protection class: IP66

KA902103



Socket truck

- for connecting a monitor
- 5-pin

KA902111



Plug

- 7-pin with 0,3 m cable

SET FOR DRAWBAR TRAILER WITH AUTOM. CHANGEOVER

KA0011



Scope of delivery

- 1x 5 m cable, 5-pin
- 2x 20 m cables, 5-pin
- 1x socket for the tractor unit with trailer detection
- 1x 7-pin trailer plug with 0,3 m cable

ITEMS

KA005405



Cable

- 5 m
- 5-pin round plug on both sides
- Protection class: IP66

KA000471



Cable

- 20 m
- 5-pin round plug on both sides
- Protection class: IP66

KA902104



ABS socket tractor unit with trailer identificatio

- automatic ejection
- reverse polarity protectio

KA902111



Plug

- 7-pin with 0,3 m cable

SET FOR CENTRAL AXLE TRAILER WITH MAN. CHANGEOVER

KA0012



KA101099



KA000471



KA902103



KA902102



KA902101



Scope of delivery

- 1x 2-channel switch box, 5-pin
- 2x 20 m cables, 5-pin
- 1x 5-pin socket for the tractor unit (for connecting a monitor)
- 1x 5-pin socket for the trailer (for connecting a camera)
- 1x professional spiral cable, 5-pin

ITEMS

2-channel switch box 5pin.

- Input: 5-pin (2x) + Trigger (1x)
- Output: 5-pin (1x)
- Connection of two camera signals using a single control voltage on one monitor

Cable

- 20 m
- 5-pin round plug on both sides
- Protection class: IP66

ABS/EBS socket for tractor unit

- For connecting a monitor
- 5-pin

ABS socket trailer

- For connecting a camera
- 5-pin

Spiral cable Professional

- Input: 5-pin (2x) + Trigger (1x)
- Output: 5-pin (1x)
- Connects two camera signals using a single control voltage on one monitor

SET FOR CENTRE AXLE TRAILERS WITH AUTO. SWITCHING

KA0013



Scope of delivery

- 1x 5 m cable, 5-pin
- 2x 20 m cables, 5-pin
- 1x socket for the tractor unit with trailer detection
- 1x 5-pin socket for the trailer (for connecting a camera)
- 1x professional spiral cable, 5-pin

ITEMS

KA005405



Cable

- 5 m
- 5-pin round plug on both sides
- Protection class: IP66

KA000471



Cable

- 20 m
- 5-pin round plug on both sides
- Protection class: IP66

KA902104



ABS socket tractor unit with trailer identification

- automatic ejection
- reverse polarity protection

KA902102



Trailer socket

- For connecting a camera
- 5-pin

KA902101



Spiral cable Professional

- Input: 5-pin (2x) + Trigger (1x)
- Output: 5-pin (1x)
- Connects two camera signals using a single control voltage on one monitor

SET FOR SEMITRAILERS

KA0014



Scope of delivery

- 1x 20 m cable, 5-pin
- 1x 10 m cable, 5-pin
- 1x 5-pin socket for the tractor unit (for connecting a monitor)
- 1x 5-pin socket for the trailer (for connecting a camera)
- 1x professional spiral cable, 5-pin

ITEMS

KA000471



Cable

- 20 m
- 5-pin round plug on both sides
- Protection class: IP66

KA005410



Cable

- 10 m
- 5-pin round plug on both sides
- Protection class: IP66

KA902103



ABS/EBS socket for tractor unit

- for connecting a monitor
- 5-pin

KA902102



ABS socket trailer

- for connecting a camera
- 5-pin

KA902101



Spiral cable Professional

- Input: 5-pin (2x) + Trigger (1x)
- Output: 5-pin (1x)
- Connects two camera signals using a single control voltage on one monitor

Vehicle	Description	Shutter	Itemnr.	Illustration
MAN/Scania	Adapter MAN MMT2/MMT3/Scania Premium without pre-equipment 4pin.	X	KA002750	
	Adapter MAN MMT2/MMT3/Scania Premium without pre-equipment 5pin.	✓	KA002755	
MAN	Adapter MAN MMT3 with pre-equipment (waterproof) 5pin. camera	X	KA002756	
	Adapter MAN MMT351, ME, MA, MC, MF with pre-equipment	✓	KA002765	
MAN/VW	Adapter VW Crafter KA8 2017/ MAN TGE 5pin. camera with shutter	✓	KA004755	
Mercedes Sprinter, Actros	Adapter Mercedes with pre-equipment J9J 5pin. camera with shutter	✓	KA003765	
	Adapter for mirror monitor Sprinter 5pin.	X	KA003775	
	Adapter Mercedes J9P 5pin. camera - 1 camera	X	KA003766.1CH	
	Adapter Mercedes J9P 5pin. camera - 1 camera	✓	KA003766.1CH-S	
	Adapter Mercedes J9P 5pin. camera - 2 cameras	X	KA003766.2CH	
	Adapter Mercedes J9P 5pin. camera - 3 cameras	X	KA003766.3CH	
	Adapter Mercedes J9P 5pin. camera - 4 cameras	X	KA003766.4CH	

Vehicle	Description	Shutter	Itemnr.	Illustration
Mercedes Sprinter, Actros	Kit MBUX-Interface NTG6 7“ and 10,25“	X	KA003784	
	Kit MBUX-Interface NTG6 7“ and 10,25“ with navi incl. 26pin. cable se		KA003795	
	Kit MBUX-Interface NTG6 7“ without navi incl. 31pin. cable set		KA003796	
	Kabelsatz PnP for MBUX-Interfa- ce NTG6 7“ without navi 31 pol.	✓	KA003798	
Iveco	Adapter IVECONNECT to LUIS 4 pin. camera	✓	KA004760	
	Adapter Iveco High-Connect to 5 pin. camera	✓	KA004775	
	Adapter Iveco Daily Radio Hi- Connect 7 2022	✓	KA004777.V1	
Universal	Adapter camera cable to Cinch for LUIS R7-S	X	KA500002	
Camer ad- apter cables	Adapter 5pin. monitor to 4pin. camera		KA700013	
	Monitor 4pin. to camera 5pin.	X	KA700128	
	Adapter monitor 4pin. to camera 5pin. with additional external power supply		KA700028	
Connector	Connector for camera system without cable		KA902105	

MULTI CABLE UNI



Itemnr.	Length	Plug
0301870	2 m	4 pin.
0301880	5 m	
0301900	11 m	
0301920	16 m	
0301940	21 m	
0301990	40 m	

CABLE SET FOR DRAWBAR TRAILER, MANUAL

0405600



Cable set for drawbar trailer, manual

- for automatic switching between Orlaco Reversing camera systems suitable for trucks
- consists of:
 - 16 m multi-cable
 - Automatic changeover switch

TRAILER CABLE HARNESSES FOR DRAWBAR TRAILERS

0303960



Cable harness drawbar trailer manual switching

- For manual switching between Orlaco reversing camera systems for trucks and drawbar trailers suitable
- consists of:
 - 16 m multi-cable
 - 21 m multi-cable
 - Press key

0303970



Drawbar trailer cable harness automatic

- for automatic switching between Orlaco Rear view camera systems for trucks and drawbar suitable for trailers
- consists of
 - 16 m multi-cable
 - 21 m multi-cable
 - Trailer Changeover Switch

CENTRE AXLE TRAILER CABLE SET

0303980



Cable set for centre axle trailer, manual

- For manual switching between Orlaco reversing camera systems for trucks and central axle trailers suitable
- consists of:
 - 16 m multi-cable
 - 21 m multi-cable
 - 3.5 m coiled cable
 - Press key

0303990



Cable set for centre axle trailer, automatic

- for automatic switching between Orlaco reversing camera systems for trucks and central axle suitable for trailers
- consists of
 - 16 m multi-cable
 - 21 m multi-cable
 - 3.5 m coiled cable
 - Trailer Changeover Switch

CABLE HARNESS COMPONENTS FOR SEMI-TRAILERS

0304020



Cabin cable 8m

- For the connection between the monitor in the driver's cab and semi-trailers (separate adapter cable for OE Display required)
- 8 m
- 4 pol. Round plug (connection monitor)
- 10 pol. Plug (connection spiral cable)

0303630



Spiral cable 3,5m

- For connecting a reversing camera system between truck and trailer
- 3.5 m
- 10-pin plug on both sides

0303740



Trailer cable 25m

- For the connection between the camera on the semi-trailer and trucks
- 25 m
- 4 pol. Circular connector (connection camera)
- 10 pol. Plug (connection spiral cable)

CABLE ASSEMBLY COMPONENTS FOR SEMI-TRAILER WITH 2 CAMERAS

0301780



Cabin cable for 2 cameras 8 m

- For the connection between the monitor in the driver's cab and 2 cameras on the semi-trailer (separate adapter cable required for OE display)
- 8 m
- 2 x 4 pol. Round plug (connection monitor)
- 10 pol. Plug (connection spiral cable)

0303630



Spiral cable 3,5m

- For connecting a reversing camera system between truck and trailer
- 3.5 m
- 10-pin plug on both sides

0301790



Cabin cable for 2 cameras 0,5 m

- for the connection between the truck and 2 cameras on the Semitrailer
- 0.5 m
- 2 x 4 pol. Round plug (connection to extension cord to cameras)
- 10 pol. Connector (connection to coiled cable)

0301940



Multi cable 21 m 4 pin

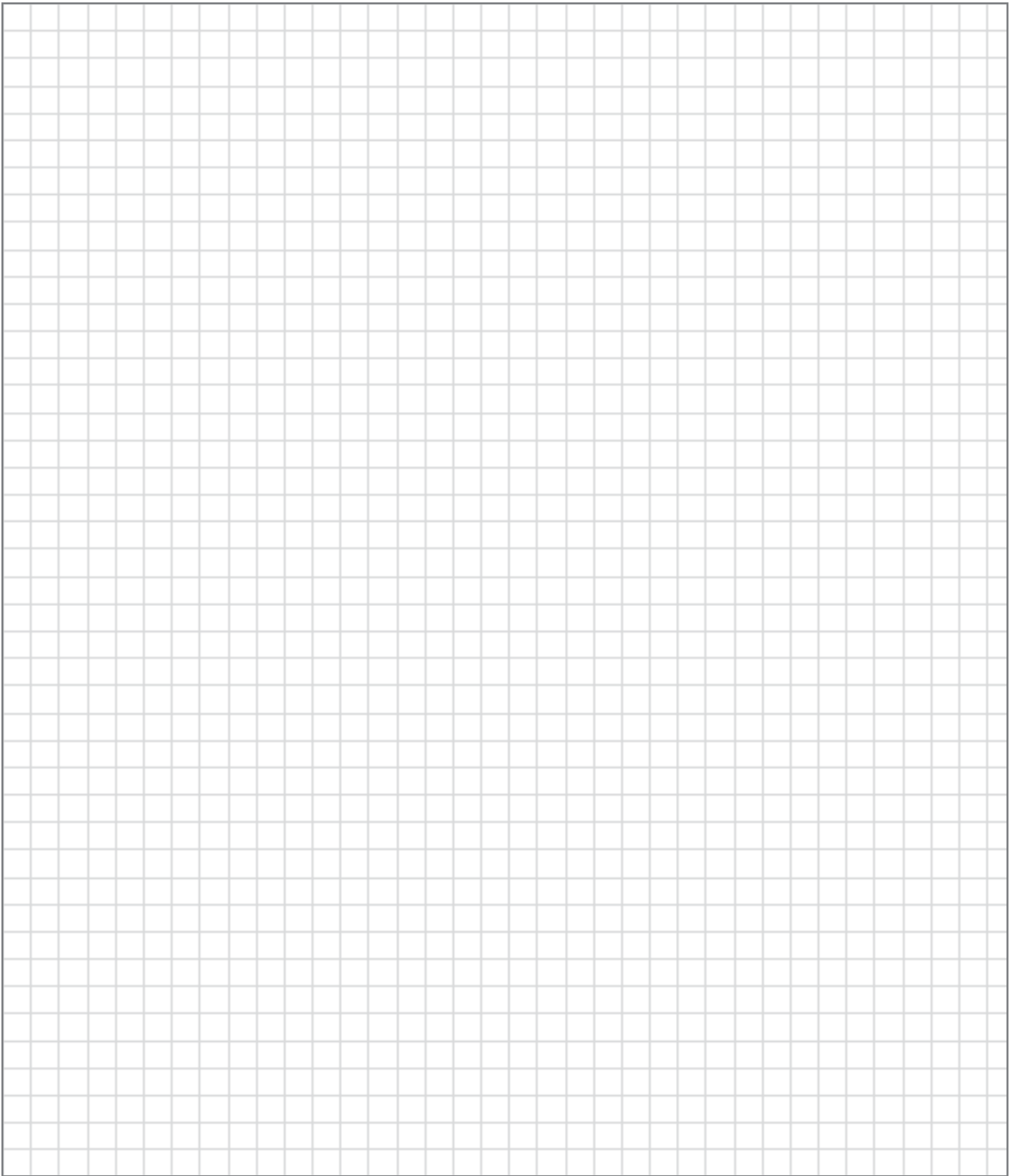
- For the connection between trailer cable and 2 Cameras on the semi-trailer
- 21 m
- 4-pin round plug on both sides.
- 2 cameras require 2 cameras!

ADAPTER CABLE

Vehicle	Description	Itemnr.	Illustration
Scania	M16 adapter cable 4pin. to Scania Premium Radio Next Gen.	0306980	
MAN	M16 adapter cable 4pin. to MAN MMT2 with camera preparation	0308400	
	M16 adapter cable 4pin. to MAN MMT2 without camera preparatio	0308410	
Mercedes Sprinter, VW Crafter	M16 adapter cable 4pin. to HMI Fakra, camera preparation FR7	0306660	
	M16 adapter cable 4pin. to HMI Fakra, camera preparation J9J	0306680	
Mercedes Actros	M16 adapter cable 4pin. to HMI Fakra, camera preparation J9P	0309130	
Volvo, Renault	M16 adapter cable 4pin. to integrated display (Volvo FH 4/FM 4 SID High, Renault T 6YR02)	0304990	
Snooper, TomTom	M16 adapter cable 4pin. to 3,5mm jack video Snooper/Tom Tom	0304060	
Snooper	M16 adapter cable 4pin. to 2,5mm jack video Snooper	0308430	
Universell	M16 Adapterkabel 4pol. auf Cinch Tulpe/RCA jack	0303770	
	M16 Adapterkabel 4pol. auf BNC	0303860	

SPARE PARTS AND ACCESSORIES

Description	Itemnr.	Illustration
10 pol. Harting Plug Set	0351100	
4 pol. Plug female	1310841	
4 pol. Male connector	1312001	
Plug Protective Cap Plug M16	1350200	
Plug Protective Cap Socket M16	1350300	
Housing Harting Connector	1399500	
Housing Harting box with lid	1399510	
Harting Plug Insert Plug	1399600	
Harting plug socket socket	1399610	
Reduction	2200250	
Cable entry PG9	2205200	





Ing A.F. Baeder Ges.m.b.H.

📍 Kolpingstraße 13, 1230 Wien

☎ +43 (0)1 865 16 40

✉ sales@baeder-automotive.com

🌐 www.baeder-automotive.com

